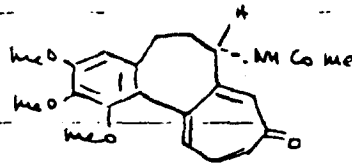


Anti-Tumor Agents, Dr. K. Jewar (T.P.I)

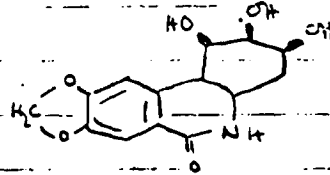
ALKALOIDS

Colchicine (*Colchicum autumnale*)

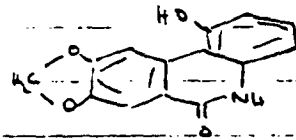


Nitrogen Mustards

Narciclasine (*Narcissus* spp.)

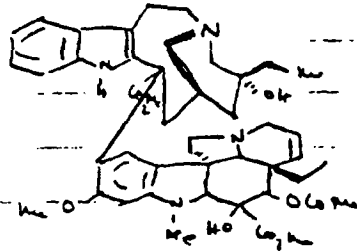


Narcipavine (*Amurghidaceae*)



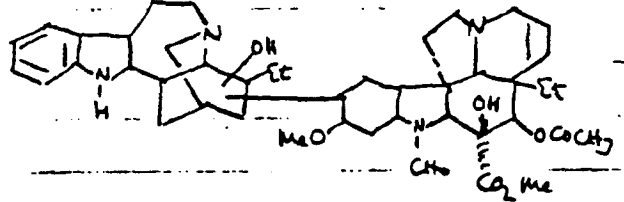
Viblastine (*Periwinkle*, *Viola rosea*)

Chronic leukemia, choriocarcinoma  
breast carcinoma, Hodgkin's disease.

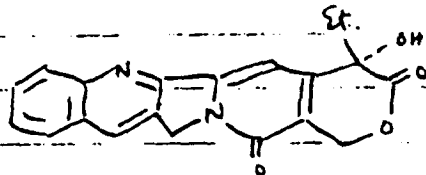


Vincristine (*Periwinkle*, *Viola rosea*)

lymphoma, acute lymphocytic  
leukemia, congenital e.g. lymphoma,  
breast carcinoma.

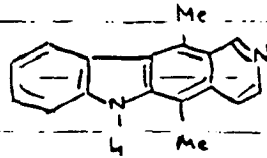


Camptothecin (*Camptotheca acuminata*)

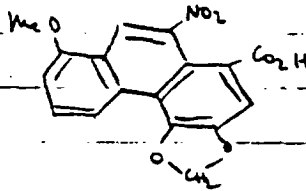


100086553

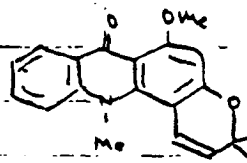
Ellipticine (Ochrosia sp.)



Aristolochic acid (Aristolochia spp)

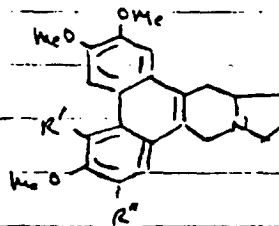


Acronycine (Acronycha baueri)



Tylophorine (Tylophora spp)

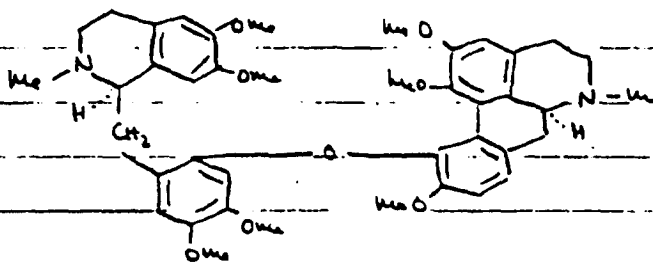
R' = H, R'' = OMe



Tylocrebine

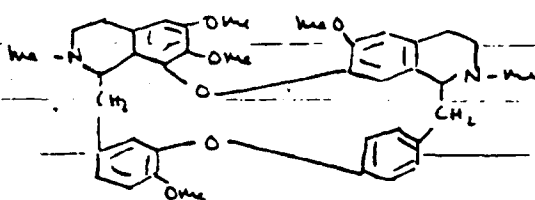
R' = OMe, R'' = H

Thalicarpine (Thalictrum dasycarpum)

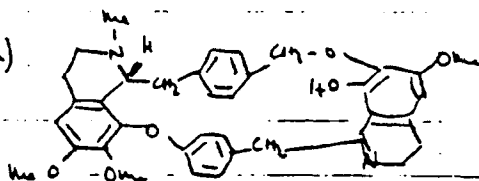


100086554

Tetrandrine (Stephania tetrandra)



Cisamparcine (Cissampelos pareira)



Yuccastaline

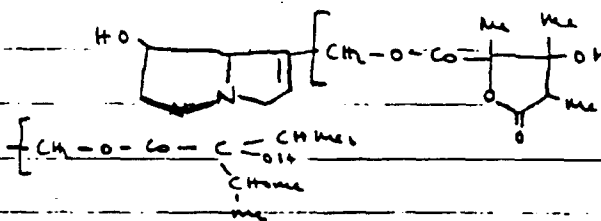
Heliotrine

Serecionine

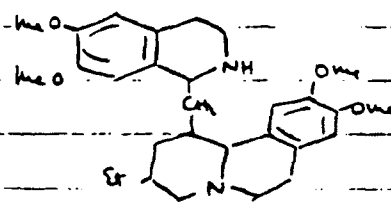
active

but

hepatotoxic

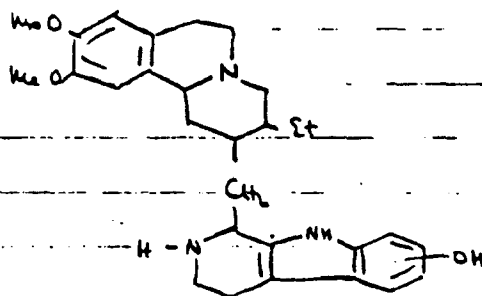


Emetine (Ipecac, Psychotria sp)



Tubulosine (Pogonopus tubulosus

& Alangium lamarkii)

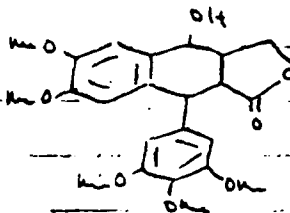


1008655

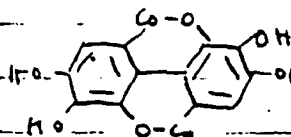
$\beta$ -Solanine (Solanum tripartitum  
& S. dulcamara)

NON-ALCALOIDAL

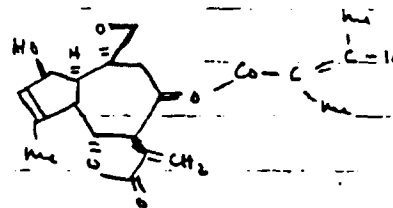
Podophyllotoxin (Podophylla & ~~Podocarpus~~ Juniperis)



Ellagic acid (Juglans nigra)

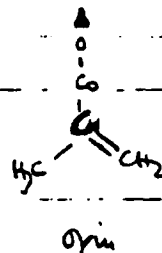
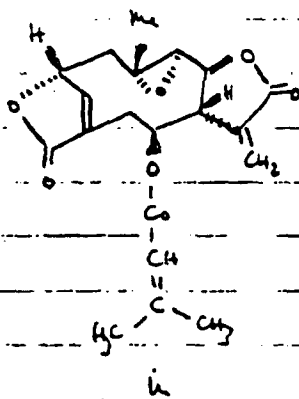


Eupatorin (Eupatorium semiserratum)



SESQUITERPENE LACTONES

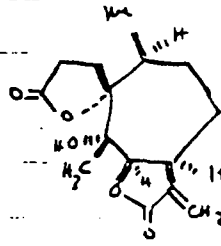
Elephantopin } (Elephantus elatus)  
Elephantin



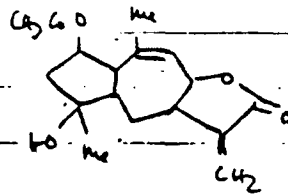
100086556

Vernolepin (*Veronica hymenolepis*)

Psilostachyin (*Ambrosia* spp.)



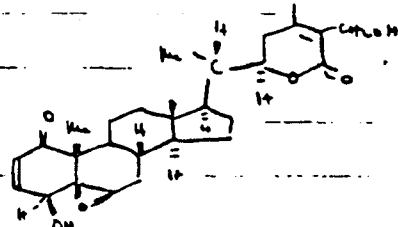
Gaillardin (*Gaillardia pulchella*)



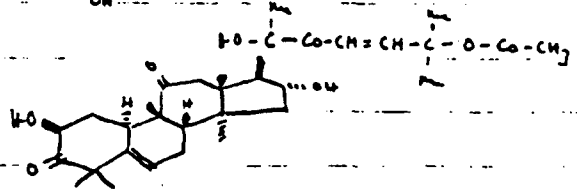
Pulchellidine ( " " )

STEROIDS:

Witaferin A (*Wittania sumnifera*  
*Acruta arborescens*)

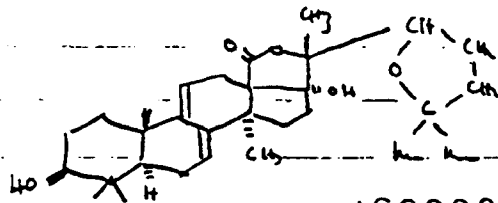


Cucurbitacin B (*Acer negundo*)



" " E ( " " ) ditto with 1-2 F.

Oxidohalothryogenin (*Actinomyces* sp  
Sea Cucumber, animal)



100086557

~~Mould~~ MOULD METABOLITES

A. from Streptomycetes spp.

Actinomycin D

Streptomycin

Streptozotocin

Streptomycin

Streptomycin

Damomycin

Streptomycin

Streptomycin

Streptomycin

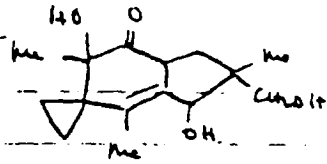
5-azacytidine

Blasticidin S

100086558

B. Other models

Lampterol (Illudin S)  
from *Lampteromyces japonicus*  
and *Clitocybe illudens*



100086559