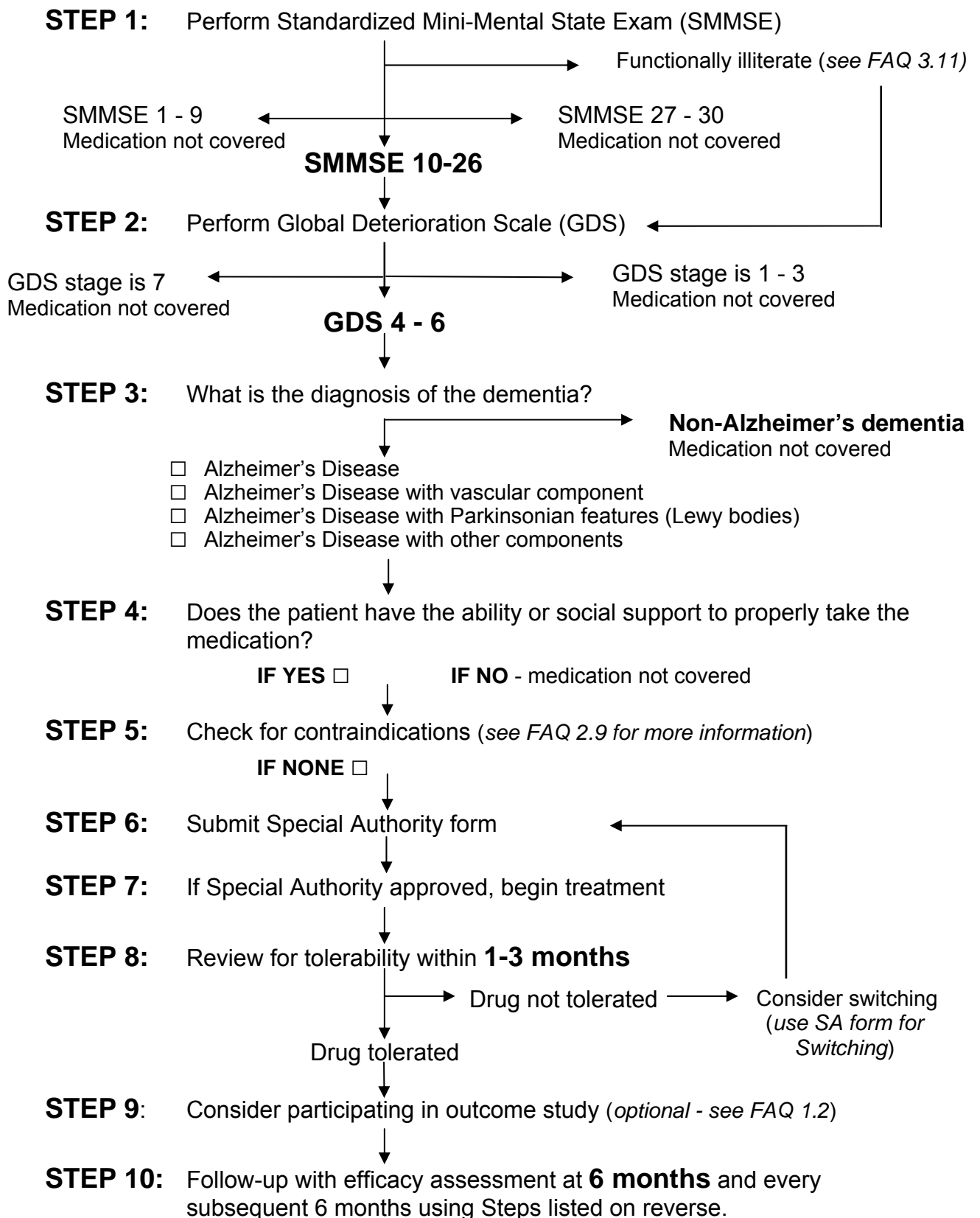


ALGORITHM FOR INITIAL COVERAGE OF CHOLINESTERASE INHIBITORS FOR MILD TO MODERATE ALZHEIMER'S DISEASE



ALGORITHM FOR 6-MONTH ASSESSMENT AND CRITERIA FOR CONTINUATION/SWITCHING OF CHOLINESTERASE INHIBITORS FOR MILD TO MODERATE ALZHEIMER'S DISEASE

PharmaCare coverage is continued for patients in 6-month increments when they meet the mandatory requirements as follows:

- individual remains in the mild to moderate stages of Alzheimer's disease (SMMSE ≥ 10 , GDS ≥ 4 to ≤ 6);
- there is stabilization or improvement during the previous 6-month's therapy (review patient's cognitive, functional and behavioural symptoms).

STEP 1	LAST 6-MONTH SMMSE SCORE:	CURRENT SMMSE SCORE:	DIFFERENCE:	<input type="checkbox"/> UNABLE TO COMPLETE SMMSE BECAUSE OF FUNCTIONAL ILLITERACY	GDS STAGE:
STEP 2	ASSESS THE CHANGE IN ABILITY OVER THE LAST 6 MONTHS COGNITION A. MEMORY, REASONING AND PERCEPTION (E.G. NAMES, TASKS, SMMSE) _____ (+1 IMPROVED, 0 NO CHANGE, -1 WORSE) FUNCTION B. INSTRUMENTS OF DAILY LIVING (E.G. TELEPHONE, SHOPPING, MEAL PREPARATION) _____ (+1 IMPROVED, 0 NO CHANGE, -1 WORSE) C. BASIC ACTIVITIES OF DAILY LIVING (E.G. BATHING, DRESSING, HYGIENE, TOILETING) _____ (+1 IMPROVED, 0 NO CHANGE, -1 WORSE) BEHAVIOUR D. NEUROPSYCHIATRIC SYMPTOMS (E.G. AGITATION, DELUSIONS, HALLUCINATION, APATHY) _____ (+1 IMPROVED, 0 NO CHANGE, -1 WORSE) <p style="text-align: center;">TOTAL SCORE (A+B+C+D) _____</p>				
STEP 3	TOTAL SCORE		OVERALL PATIENT ASSESSMENT RATING		RECOMMENDATION
	+4	→ CLINICAL JUDGMENT →	<input type="checkbox"/> VERY MUCH IMPROVED	POSITIVE RESPONDER	CONTINUE TREATMENT; RE-EVALUATE PATIENT EVERY 6 MONTHS
	+3 OR +2		<input type="checkbox"/> MUCH IMPROVED		
	+1		<input type="checkbox"/> MINIMALLY IMPROVED		
	0		<input type="checkbox"/> NO CHANGE	INDETERMINATE RESPONDER	CONTINUE TREATMENT; RE-EVALUATE PATIENT EVERY 6 MONTHS (CONSIDER SWITCHING CHOLINESTERASE INHIBITOR)
	-1		<input type="checkbox"/> MINIMALLY WORSE		
	-2 OR -3		<input type="checkbox"/> MUCH WORSE	NON-RESPONDER	STOP TREATMENT OF CURRENT CHOLINESTERASE INHIBITOR (CONSIDER SWITCHING CHOLINESTERASE INHIBITOR)
	-4		<input type="checkbox"/> VERY MUCH WORSE		
ELIGIBILITY CRITERIA: DIAGNOSIS OF ALZHEIMER'S DISEASE WITH SMMSE ≥ 10 , GDS ≥ 4 to ≤ 6 , OVERALL PATIENT ASSESSMENT RATING OF 'POSITIVE RESPONDER' OR 'INDETERMINATE RESPONDER.'					